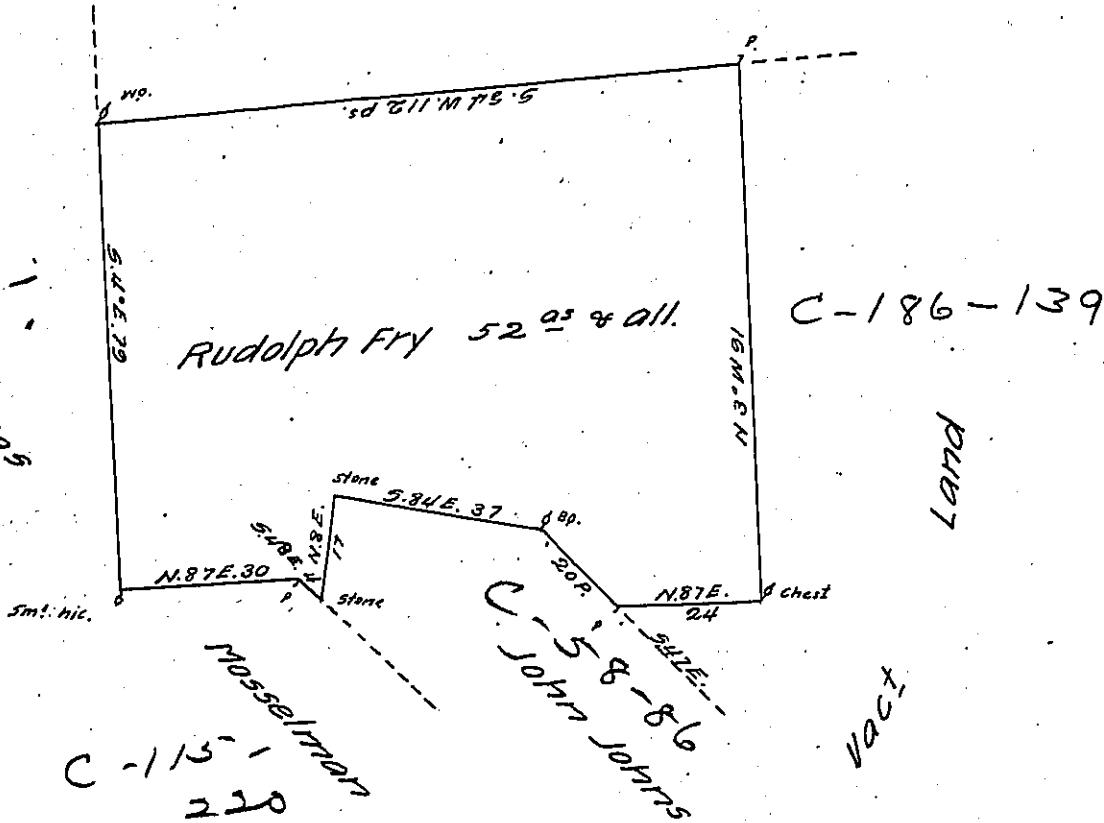


A-64-172

Rudolph Fry's other Land

C-115-215
Matthias



It appears that the above described Tract of Land was surveyed for Rudolph Fry many years ago in Pursuance of a Warrant dated the 30th of April 1765 by Benjamin Parvin. Re-surveyed the 11th of mo. 1787 according to the old lines. Situate in Brecknock Township in Lancaster County containing 52 Acres & the Allowance of six p. Ct.

by Thos Lightfoot

IN TESTIMONY that the above is a copy of the original remaining on file in the Department of Internal Affairs of Pennsylvania, made conformably to an Act of Assembly approved the 16th day of February, 1833, I have hereunto set my Hand and caused the Seal of said Department to be affixed at Harrisburg, this twelfth day of December 1904

Loae R. Brown
Secretary of Internal Affairs.